

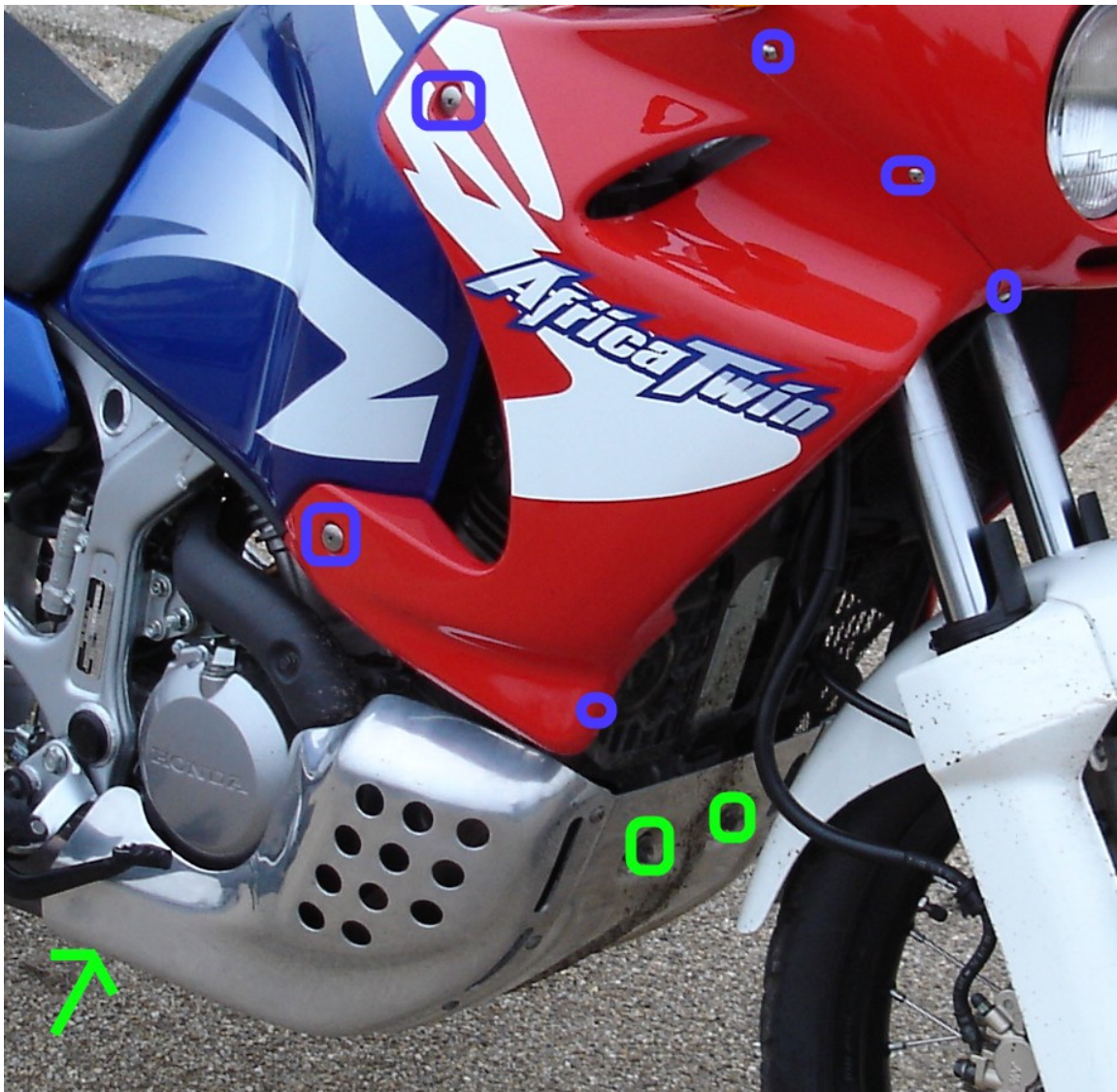
Fitting SW-Motech Crash Bars to Africa Twin, Expanded Instructions.

Whilst these are very good crashbars, the instructions and diagrams provided leave a lot to be desired, especially for the 1st time installer. When it came to fit mine, I decided to take a couple of pictures, and provide some extra guidance, to help others. The instructions are for RD07, but I think they will apply to RD04 also.

I Hope they help someone.

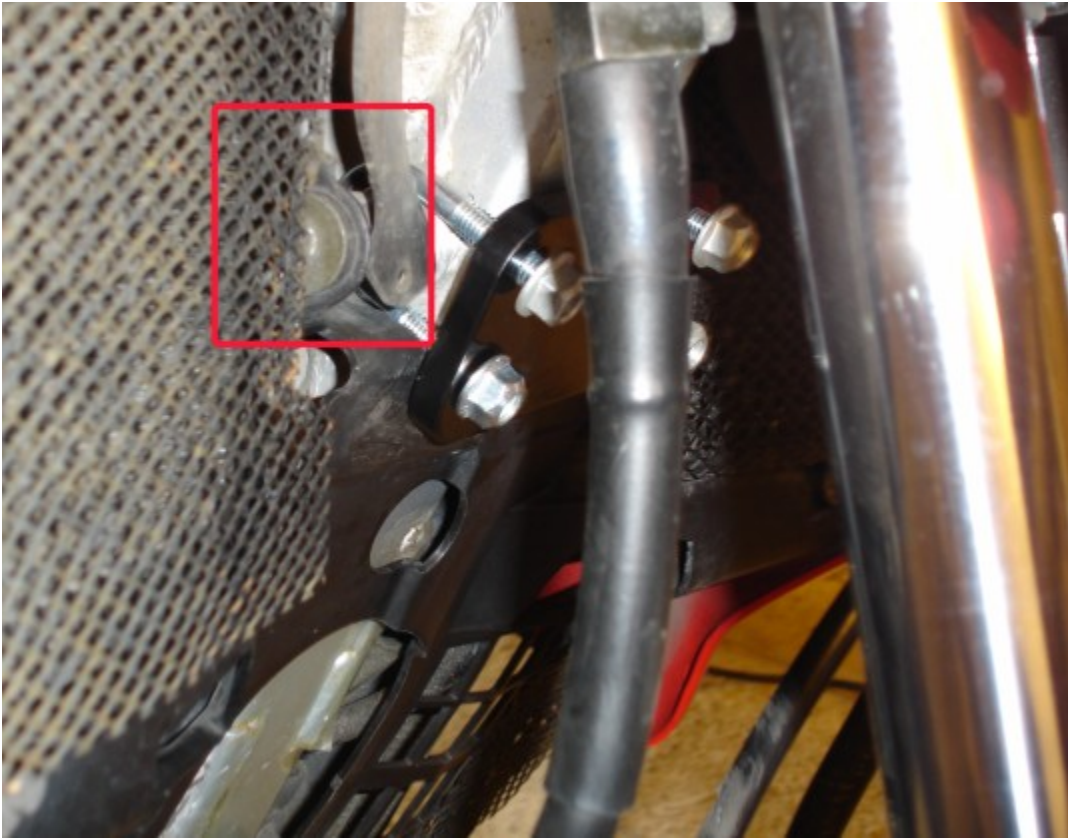
1. Bits to remove.

- a. Belly pan. Remove the 4 fixing bolts that hold the belly pan on, you can then lower the belly pan, remove it from the bike, and store it somewhere safe. The pic below shows the 3 screws in green, the 4th is on the other side, by the gear lever.
- b. R/H fairing. (the bit between the tank and the front fairing. 2 large screws, a few on the underside of the headlight mount, and 1 well hidden one down by the horn bracket. (shown in blue). Carefully remove the fairing and store it somewhere safe.

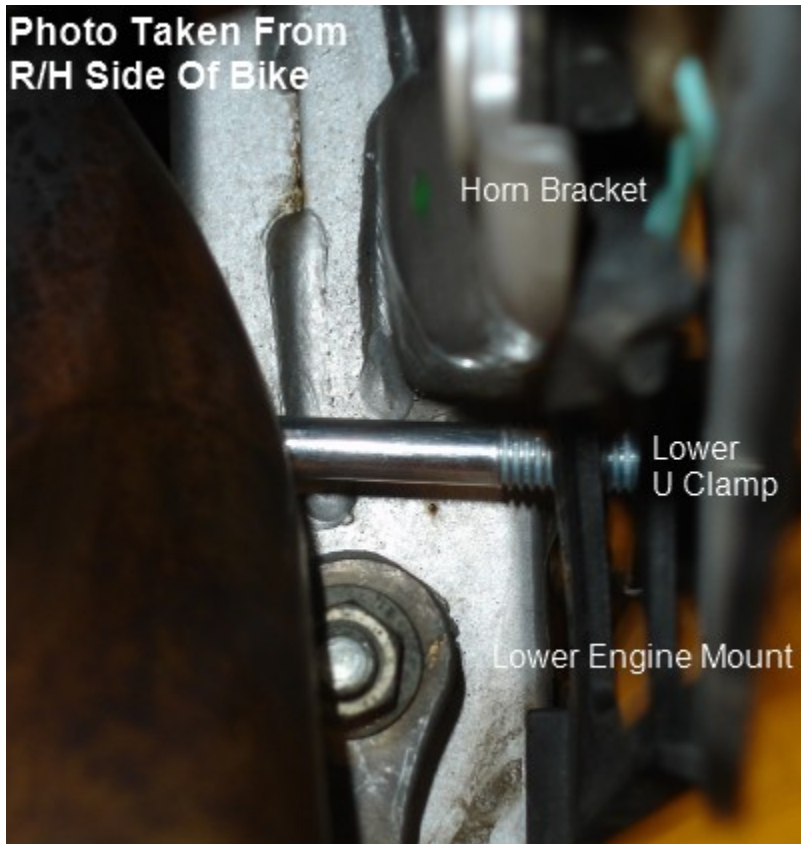


2. Fitting the brackets.

The top bracket U clamps go around the back of the radiator mounts, as show below.



The bottom bracket U clamp goes between the horn mount and the lower engine bracket, as shown below.



You should now get all the brackets in place, with the front plates and nuts loosely fitted.

Once the brackets are in place, remove the rear engine mount bolt (this is shown adequately in the SW-Motech diagram, fit the crash-bars onto the bolt, and re-install using the new longer bolt.

You should then be able to match the crashbars up with the newly installed front mounting brackets.

Proceed to EVENLY tighten the mounting bolts, ensuring identical amounts of thread protrude from each U bolt. Before fully tightening, ensure everything looks level, and tighten fully.

Re-fit the bellypan and R/H fairing. (in true Haynes Manual fashion, fitting is the reverse of removal...)

That's it. (it should look something like the pic on the next page, if not, you done something seriously wrong!!!).

Mark Gillespie
18/03/2006

